

DESCRIPTION

JX2202 is an Over-Voltage-Protection (OVP) and Over-Current-Protection (OCP) device. It can disconnect IN to OUT to protect load in case wrong input operating conditions are detected. The system is positive over voltage protected up to 36V. The internal over voltage thresholds (OVLO) is 6.1V and internal over current thresholds (OCP) is 2.3A.

JX2202 also has internal over temperature protect (OTP) function and it can monitor chip temperature to protect the device.

The JX2202 is available in SOT-23 package. Standard products are Pb-free and Halogen-free.

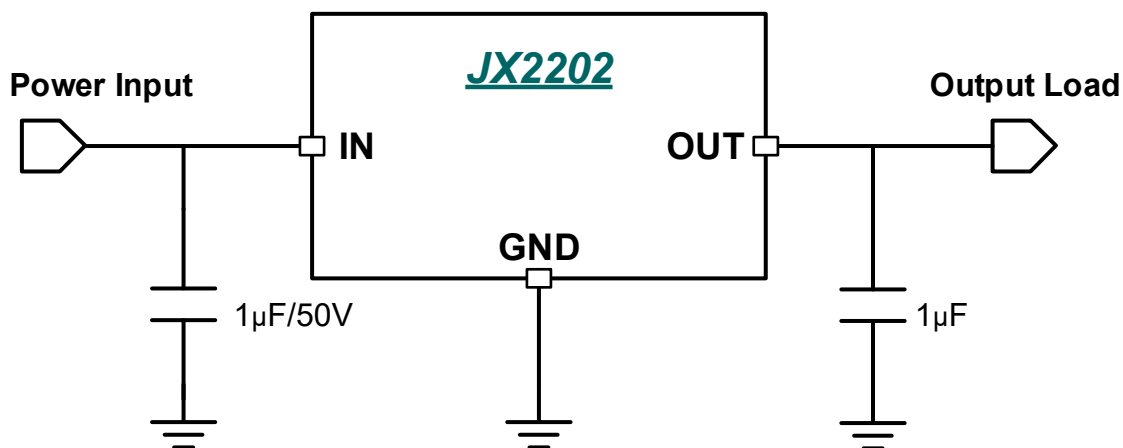
FEATURES

- ✧ Typical R_{ON} : 130m Ω N-Channel MOSFET @5V/1A
- ✧ Maximum Output Current: 2.0A.
- ✧ Maximum input voltage: 36V
- ✧ Internal Over voltage Lockout : 6.1V
- ✧ Internal Over current Lockout : 2.3A(TYP @ $T_A = 25^{\circ}\text{C}$)
- ✧ Over voltage-Protection Response Time: 50ns(TYP.)
- ✧ Startup Debounce Time: 14ms (TYP.)
- ✧ Typical Output Power on Time: 1.4ms (TYP.)
- ✧ Internal Thermal-Shutdown Protection
- ✧ ESD Protected: Human Body Model: JESD22-A114 (All pins) $\pm 2\text{KV}$
- ✧ SOT-23

APPLICATIONS

- ✧ GPS
- ✧ PMP
- ✧ MID
- ✧ PAD
- ✧ Digital cameras
- ✧ Digital Videos

TYPICAL APPLICATION CIRCUIT



ORDER INFORMATION

Part Number	Package	Marking	Packing Option
JX2202VR-G	SOT-23	2202	Tape and Reel, 3000